



Amherst College
Department of Mathematics and Statistics

MATH 105

MIDTERM 1

FALL 2018

NAME: _____

Read This First!

- Keep cell phones off and out of sight.
- Do not talk during the exam.
- You are allowed one page of notes, front and back. No other books, notes, calculators, cell phones, communication devices of any sort, webpages, or other aids are permitted.
- Please read each question carefully. Show **ALL** work clearly in the space provided. There is an extra page at the back for additional scratchwork.
- In order to receive full credit on a problem, solution methods must be complete, logical and understandable.

Grading - For Instructor Use Only

Question:	1	2	3	4	5	6	Total
Points:	18	16	5	14	7	0	60
Score:							

This page intentionally left blank. You may use it for scratchwork.

1. [18 points] Evaluate the following limits. Answer either as a specific value, $+\infty$, $-\infty$, or “DNE.”

(a) $\lim_{x \rightarrow 4} \frac{x^2 - x - 12}{x^2 - 3x - 4}$

(b) $\lim_{x \rightarrow 3^-} \frac{x - 5}{x - 3}$

(c) $\lim_{x \rightarrow -1} \frac{x^2 - 1}{\sqrt{x + 5} - 2}$

$$(d) \lim_{x \rightarrow 2} \frac{x^2 + 2x - 7}{x^2 - 9}$$

$$(e) \lim_{x \rightarrow 1} \frac{x^2 - 3x + 2}{|x - 1|}$$

$$(f) \lim_{x \rightarrow 1^+} \frac{x^2 + 4x + 3}{x^2 - 4x + 3}$$

2. [16 points] Consider the following piecewise function.

$$f(x) = \begin{cases} 4 & x \leq -2 \\ 4 - x^2 & -2 < x \leq 0 \\ 1 + \frac{1}{x} & 0 < x < 1 \\ 3 - x & x \geq 1 \end{cases}$$

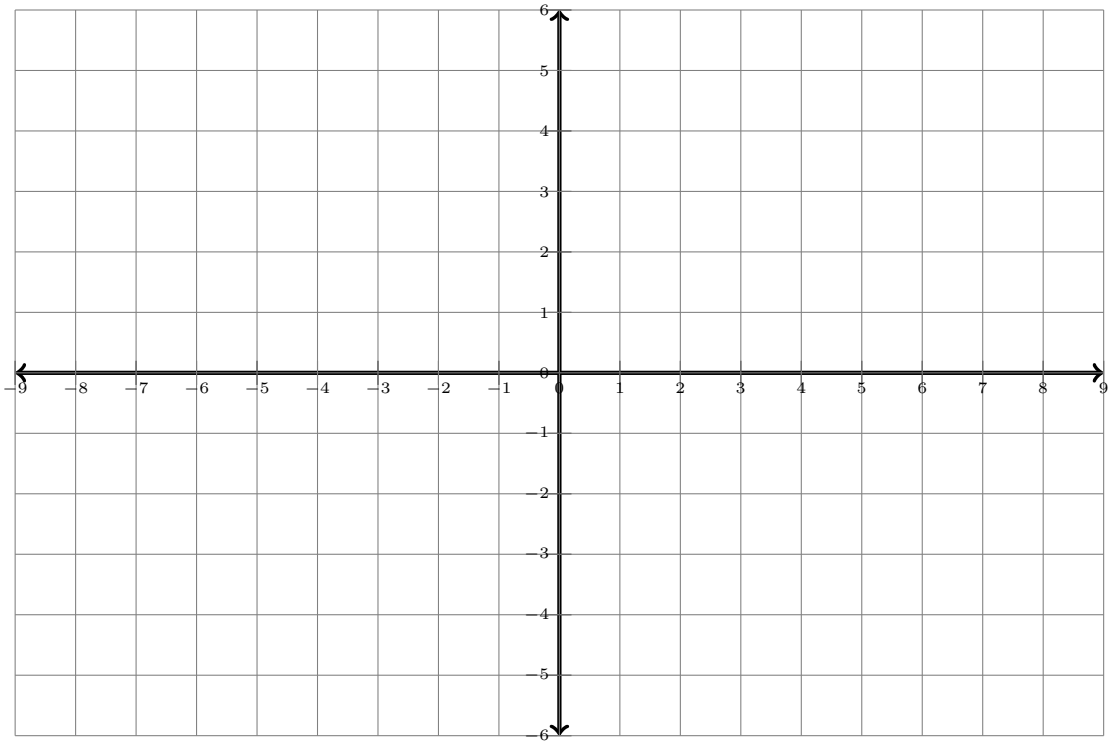
- (a) Determine all discontinuities of this function.

(continued on reverse)

The definition of $f(x)$ is reproduced below for convenience.

$$f(x) = \begin{cases} 4 & x \leq -2 \\ 4 - x^2 & -2 < x \leq 0 \\ 1 + \frac{1}{x} & 0 < x < 1 \\ 3 - x & x \geq 1 \end{cases}$$

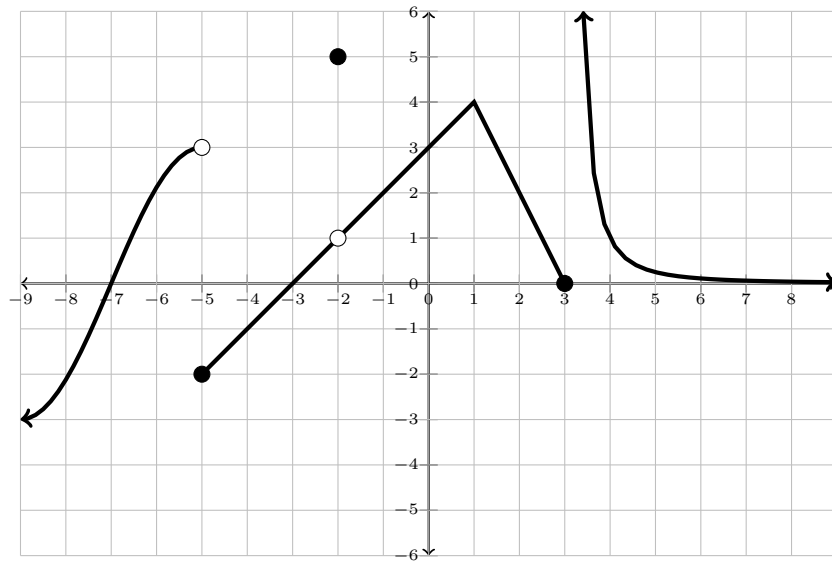
(b) Sketch the graph of this function on the axes below.



3. [5 points] Find an equation for a line that is parallel to the line $3x + 4y = 24$ and passes through the point $(1, 2)$.

This page intentionally left blank. You may use it for scratchwork.

4. [14 points] Shown below is the graph of a function $f(x)$. Determine the following limits of function values. If a value is $+\infty$ or $-\infty$, state this. If a value does not exist, answer "DNE."



(a) $\lim_{x \rightarrow (-5)^-} f(x)$

(e) $f(-2)$

(b) $\lim_{x \rightarrow (-5)^+} f(x)$

(f) $\lim_{x \rightarrow 3^-} f(x)$

(c) $f(-5)$

(g) $\lim_{x \rightarrow 3^+} f(x)$

(d) $\lim_{x \rightarrow (-2)} f(x)$

- (h) Identify all values of x where $f(x)$ is discontinuous.

This page intentionally left blank. You may use it for scratchwork.

5. [7 points] Define $f(x)$ and $g(x)$ as follows.

$$f(x) = \frac{2+x}{1-x}$$

$$g(x) = \frac{3x+1}{x-2}$$

Compute and simplify $f(g(x))$ as much as possible.

This page intentionally left blank. You may use it for scratchwork.

6. [3 points (bonus)] Let $f(x) = 2 - \sqrt{3x + 1}$. Compute

$$\lim_{h \rightarrow 0} \frac{f(x+h) - f(x)}{h}.$$

Note that the answer will be in terms of x .

This page intentionally left blank. You may use it for scratchwork.

This page intentionally left blank. You may use it for scratchwork.

This page intentionally left blank. You may use it for scratchwork.